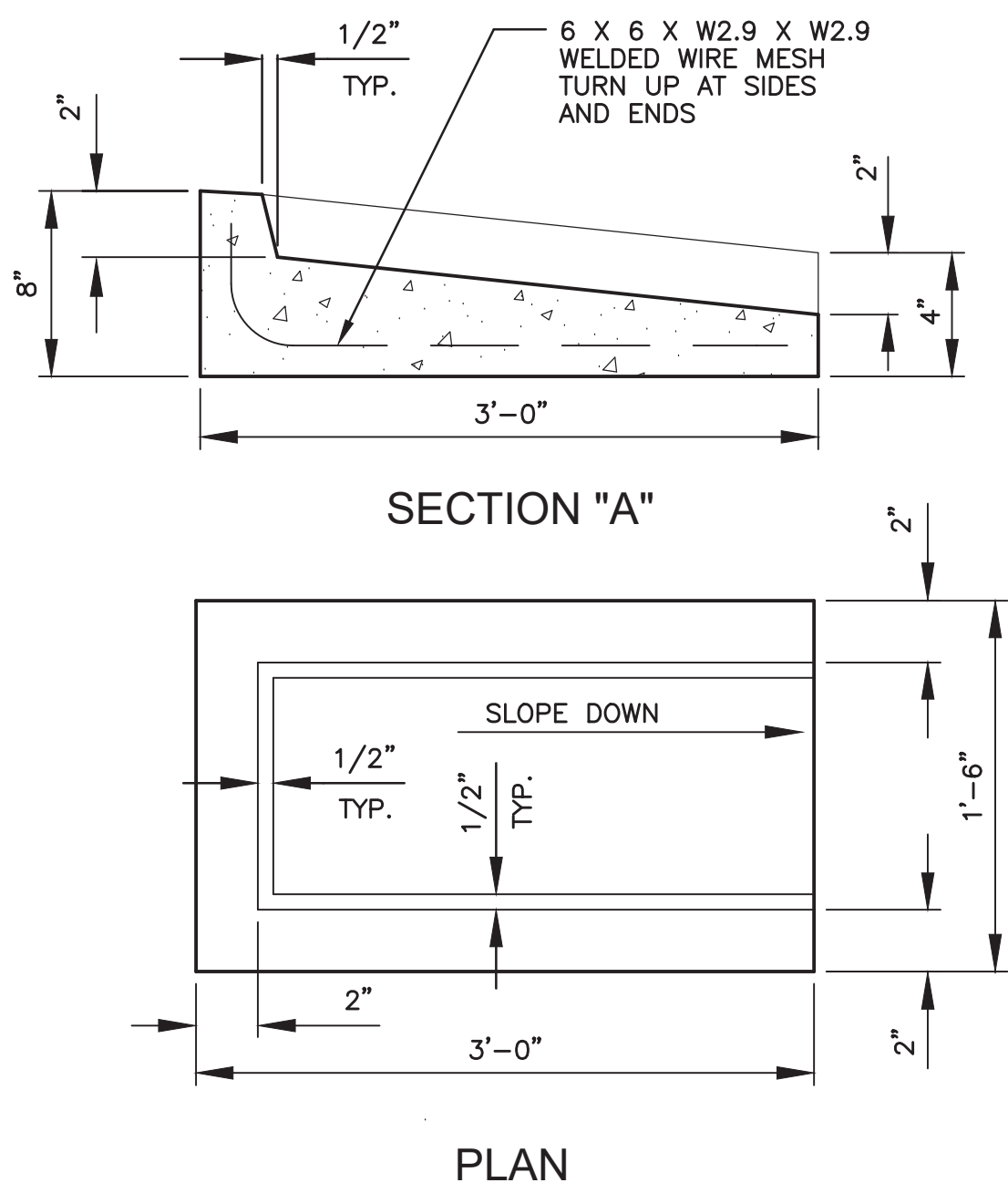
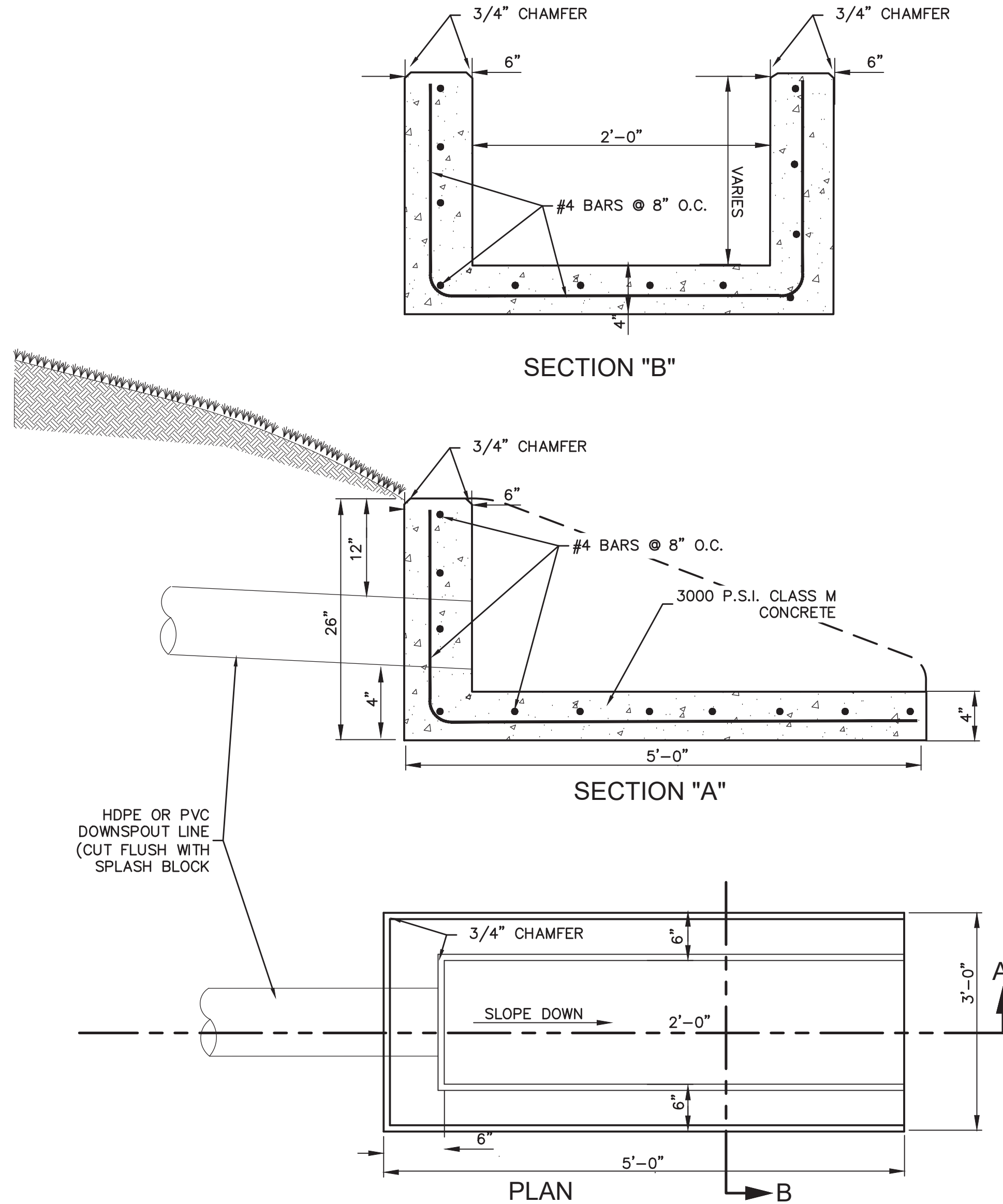


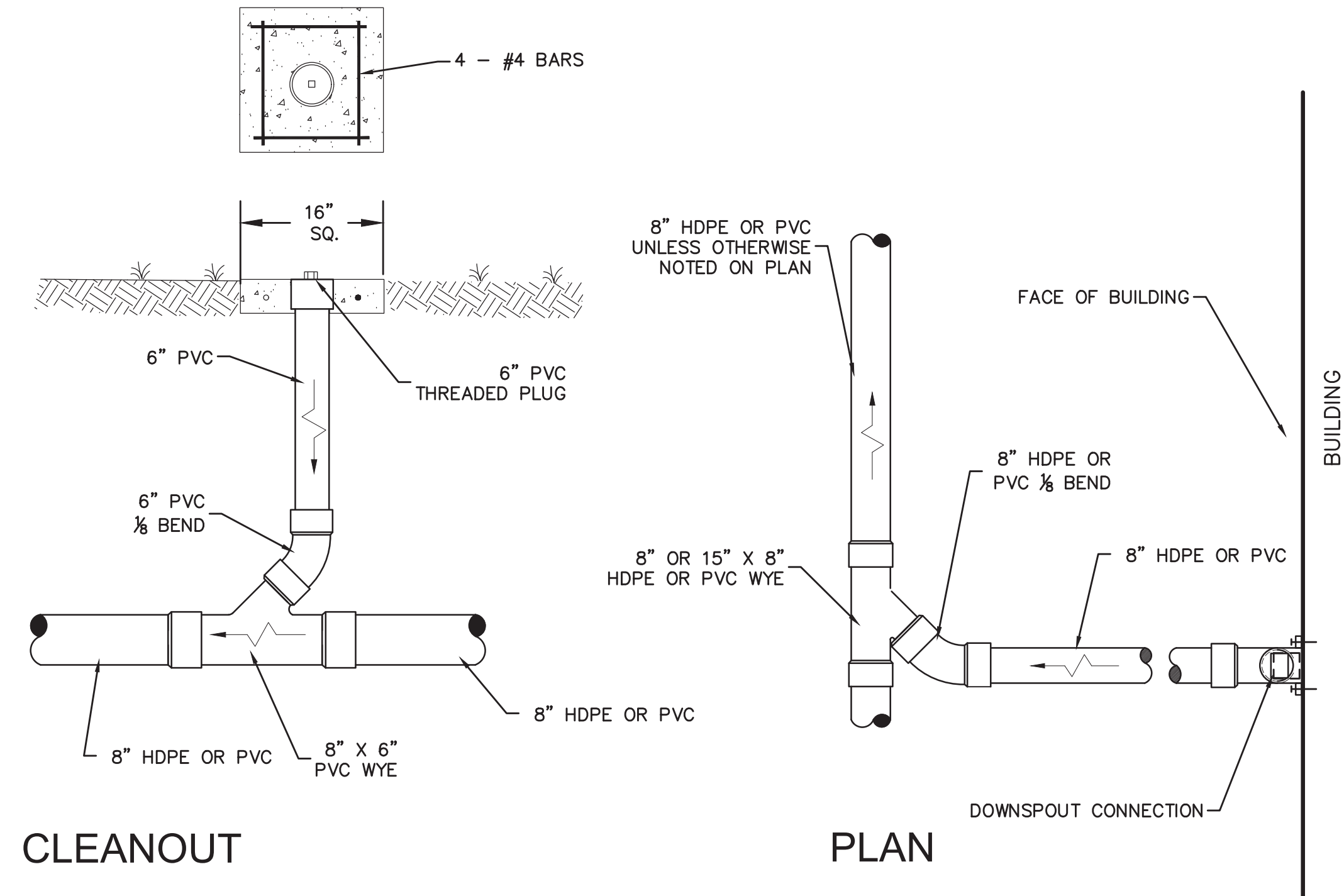
PRINTED: 9/23/2025 12:19 PM
FILE PATH: M:\13459 - Yvo - Rpsb School District 52 Bond Pineville\1 - J.I. Barron Elem\DESIGN SHEETS\DRAINAGE DETAILS.dwg



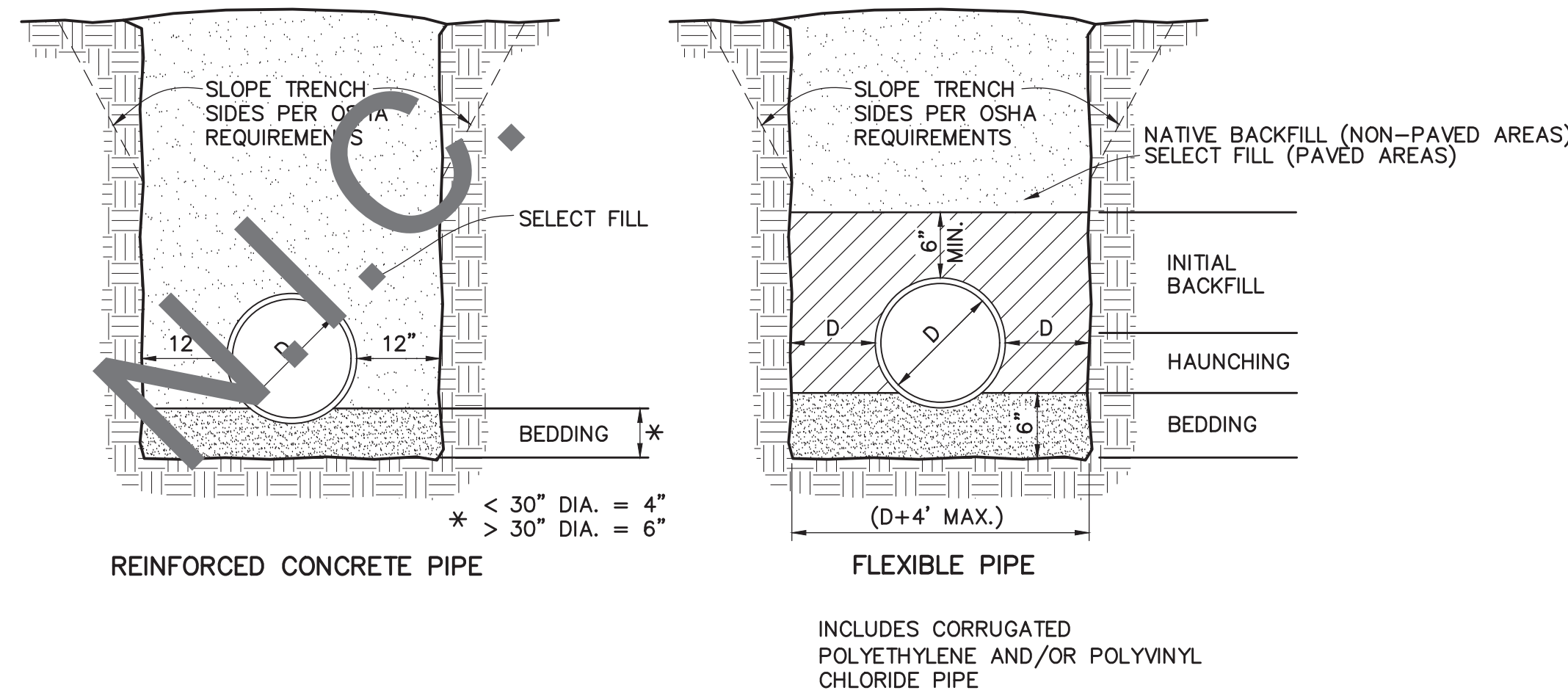
6 SPLASH BLOCK (AT DOWNSPOUTS)
N.T.S.



4 SPLASH BLOCK (PIPE OUTLET)
N.T.S.



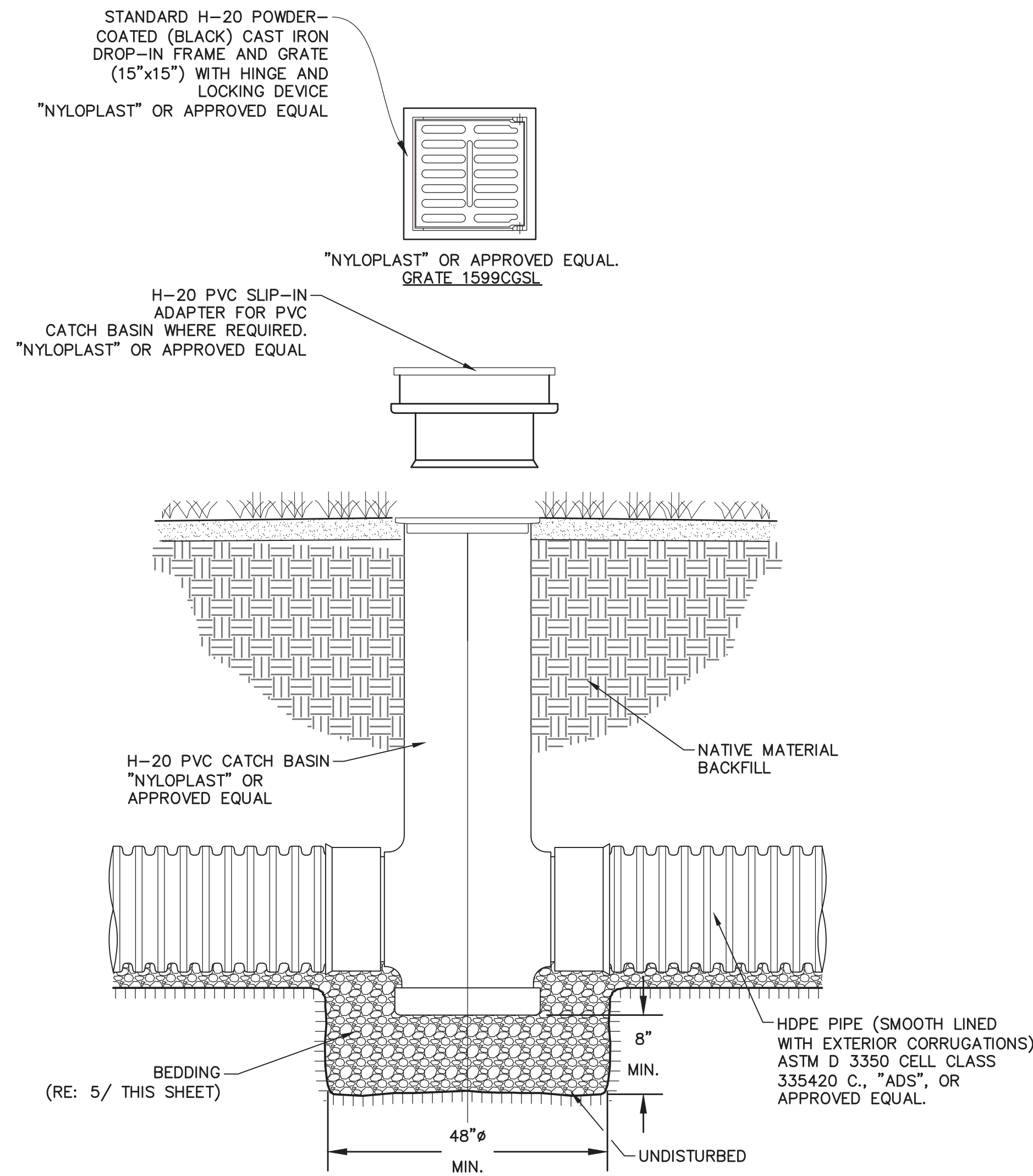
2 TYPICAL DOWNSPOUT HEADER PIPING (D.H.P.) DIAGRAM
N.T.S.



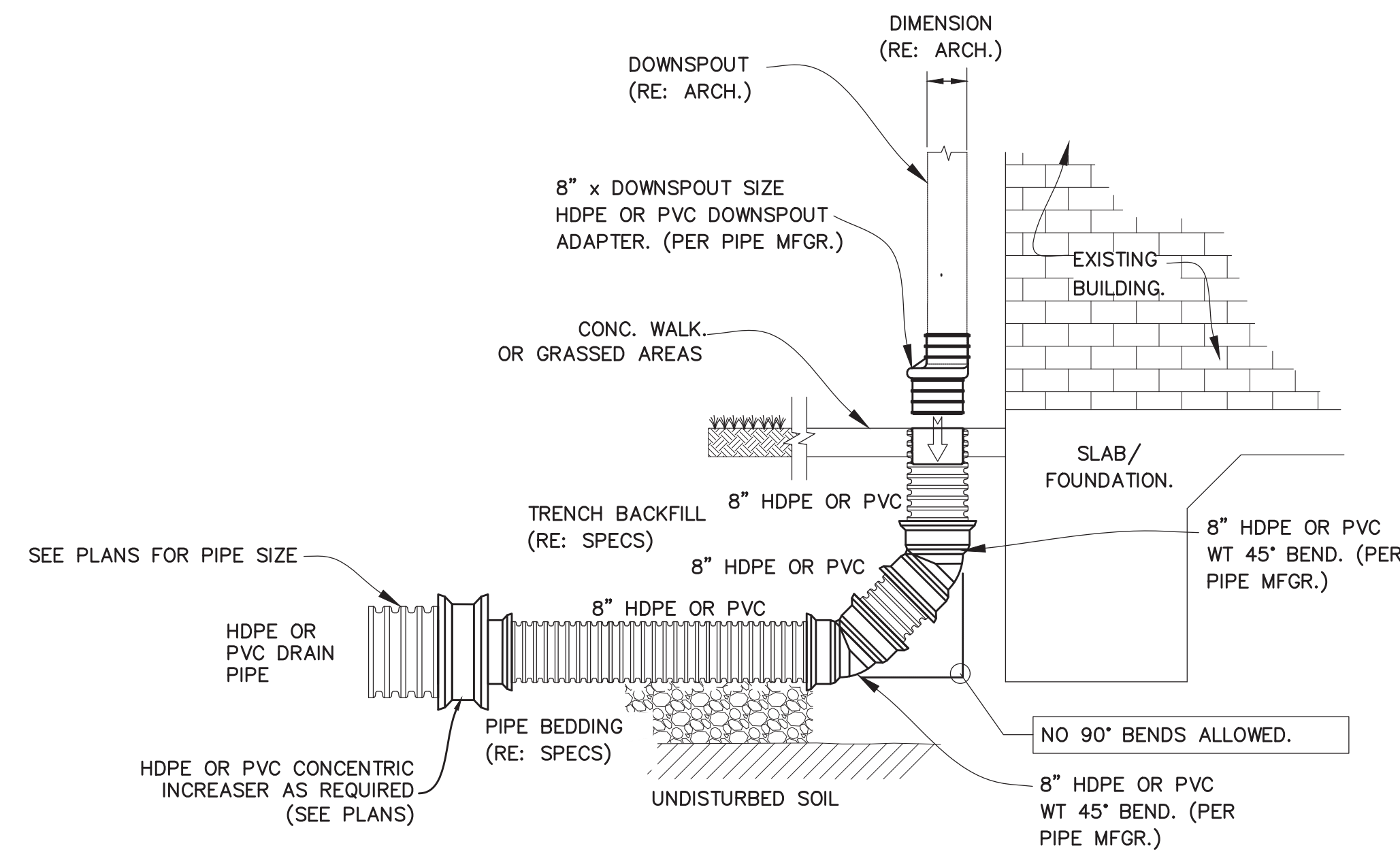
NOTES:

- 1) REFER TO SECTION 31 23 33 OF THE SITEWORK SPECIFICATIONS FOR REQUIREMENTS ON TRENCH EXCAVATION.
- 2) BEDDING SHALL BE GRAVEL OR STONE (LOUISIANA STANDARDS SPECIFICATIONS FOR ROADS AND BRIDGES - 2006 EDITION, SECTION 1003.08) COMPACTED TO 95% STANDARD PROCTOR AT $\pm 3\%$ OPTIMUM MOISTURE CONTENT (ASTM D698) AND SHALL BE SHAPED TO THE BOTTOM OF THE PIPE.
- 3) HAUNCHING AND INITIAL BACKFILL MATERIAL FOR FLEXIBLE PIPE SHALL BE CLASS I OR II GRANULAR (REF. ASTM D2321) SHALL HAVE A VOID RATIO EQUAL TO OR LESS THAN THAT OF THE BEDDING MATERIALS AND SHALL BE COMPACTED TO 98% STANDARD PROCTOR AT $\pm 3\%$ OPTIMUM MOISTURE CONTENT (ASTM D698).
- 4) BEDDING, HAUNCHING, INITIAL BACKFILL AND SELECT FILL SHALL BE IN ACCORDANCE WITH THE PIPE MANUFACTURER'S RECOMMENDATIONS.
- 5) SELECT FILL MATERIAL SHALL BE FREE OF ORGANIC OR OTHER DELETERIOUS MATERIALS, HAVE A MAXIMUM PARTICLE SIZE OF LESS THAN 3" AND HAVE A LIQUID LIMIT LESS THAN 35 AND A PLASTICITY INDEX BETWEEN 8 AND 20.
- 6) SELECT FILL SHALL BE PLACED IN 8" MAX. LOOSE LIFTS AND COMPACTED TO 95% STANDARD PROCTOR (PAVED AREAS) OR 92% STANDARD PROCTOR (NON-PAVED AREAS) AT -1% TO $+3\%$ OF OPTIMUM MOISTURE CONTENT (ASTM D698).

5 PIPE EMBEDMENT DETAIL
N.T.S.



3 PVC DRAIN BASIN (PIPE JUNCTION)
N.T.S.



1 ROOF DRAIN DOWNSPOUT CONNECTION
NOT TO SCALE